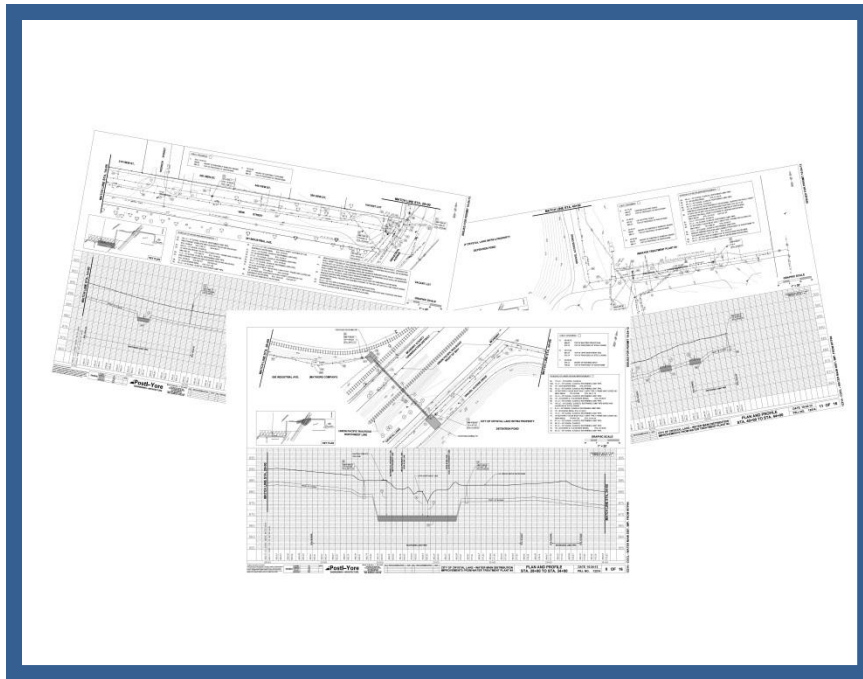


## Water Main Distribution Improvement from Water Treatment Plant #4

City of Crystal Lake



Postl-Yore and Associates was retained to provide surveying, design engineering, bidding support and construction engineering on the Water Main Distribution Improvement from Water Treatment Plant #4 Project for the City of Crystal Lake. This project encompassed designing approx. 3,500 L.F. of 12" and 16" water main which included cutting, capping, and abandoning an existing 4" water main, transferring water services and directional boring under active Union Pacific Railroad tracks.

Postl-Yore worked closely with City Staff to assure that all project details were coordinated with a private business that was being annexed into the City and also was connecting to the proposed water main. Additionally Postl-Yore assisted City Staff with obtaining easements from both private entities and public agencies for the construction of the proposed water main.

Brett Postl - Principal –In-Charge / Project Manager  
Dan Gillespie - Engineering Technician / Construction Engineer  
Construction Estimate: \$750,000  
Completion Date: Fall 2013  
Project Contact: Victor Ramirez (815) 356-3611